

MPSA Handgun League 3



25 May 2019

White River Shooting Club

MPSA Handgun League 3



Hosted by

Witrivier Skietklub



White River Shooting Club

VENUE: White River Shooting Range

DATE: 25th May 2019

REGISTRATION: 07H00 to 08H30

RO BRIEFING: 07H30 to 08H00

START : 08H30 Sharp

ENTRY FEE: R200.00

STAGES

Stage	Score	Shots	%
1	160	32	21
2	45	9	6
3	120	24	16
4	160	32	21
5	90	18	12
6	60	12	8
7	120	24	16
Totals	755	151	100%

RULES

- The competition will be run according to the current IPSC rules.
- The wearing of eye and ear protection will be required during all stages of the match for participants and spectators
- No testing of the range equipment will be allowed prior to or during the match
- Course design may be altered to enhance the stages / safety of all competitors and spectators.
- No bagging, un-bagging or indexing will be allowed on the line

MATCH DIRECTOR:

Gideon Botha

RANGE MASTER:

Ray LeClous

ARBITRATORS:

Three delegates to be appointed by Match Director as and when required

CHIEF RO:

Johan de Beer

Stage 1, Range 1 – Long Course

START POSITION: Competitor starts at A facing downrange, handgun is unloaded and holstered (PCC – Option 3).

STAGE PROCEDURE

On audible start signal engage targets whilst remaining in the demarcated area.

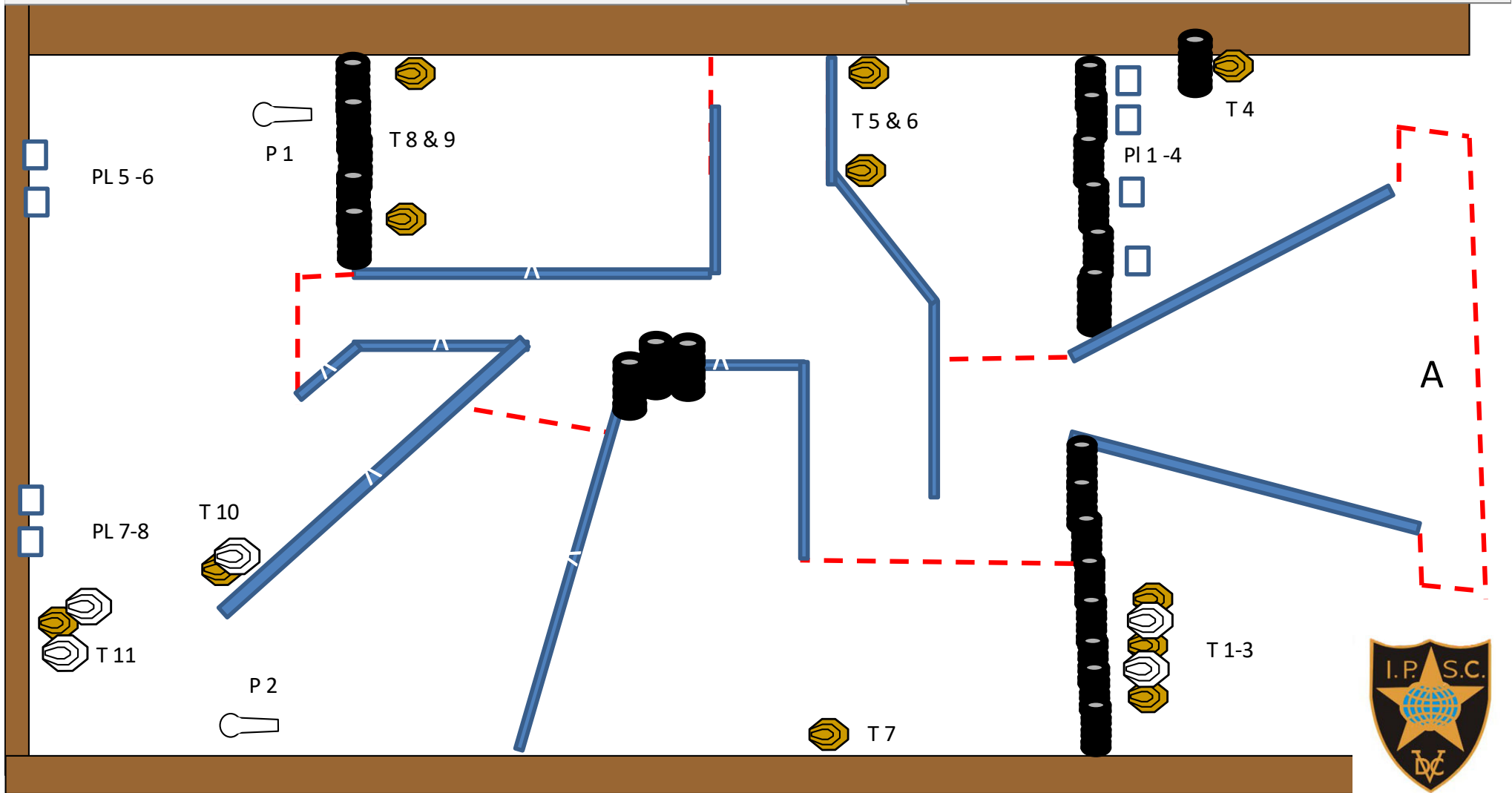
DISTANCES: 7 to 25 meters.

MINIMUM ROUNDS: 32

SCORING: 160 points

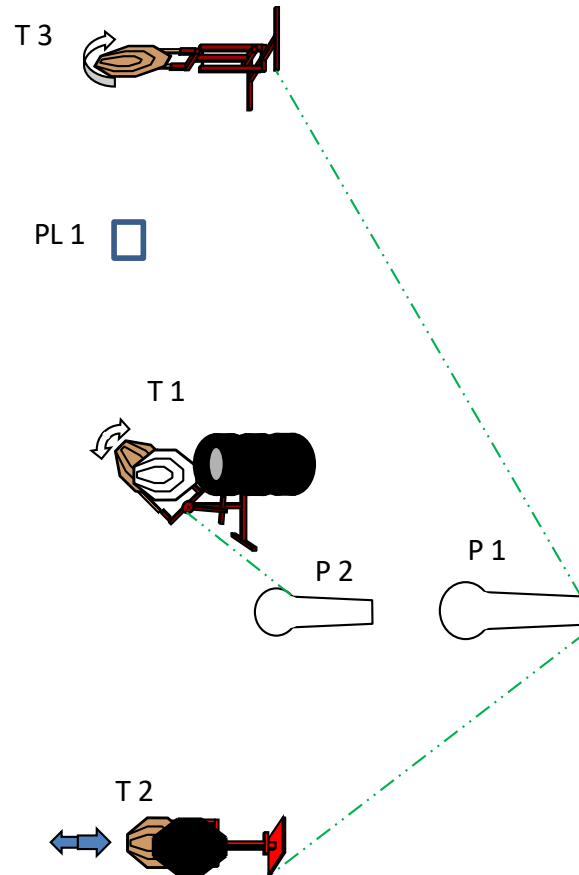
TARGETS:

11 IPSC Targets, 2 Poppers, 8 Plates, 5 No shoot targets.



Stage 2, Range 2 – Short Course

START POSITION: Competitor starts facing down range in the demarcated area.



STAGE PROCEDURE

On audible start signal engage targets as they become visible.

DISTANCES: 8 to 15 m

MINIMUM ROUNDS: 9

SCORING: 45 points

3 IPSC Targets

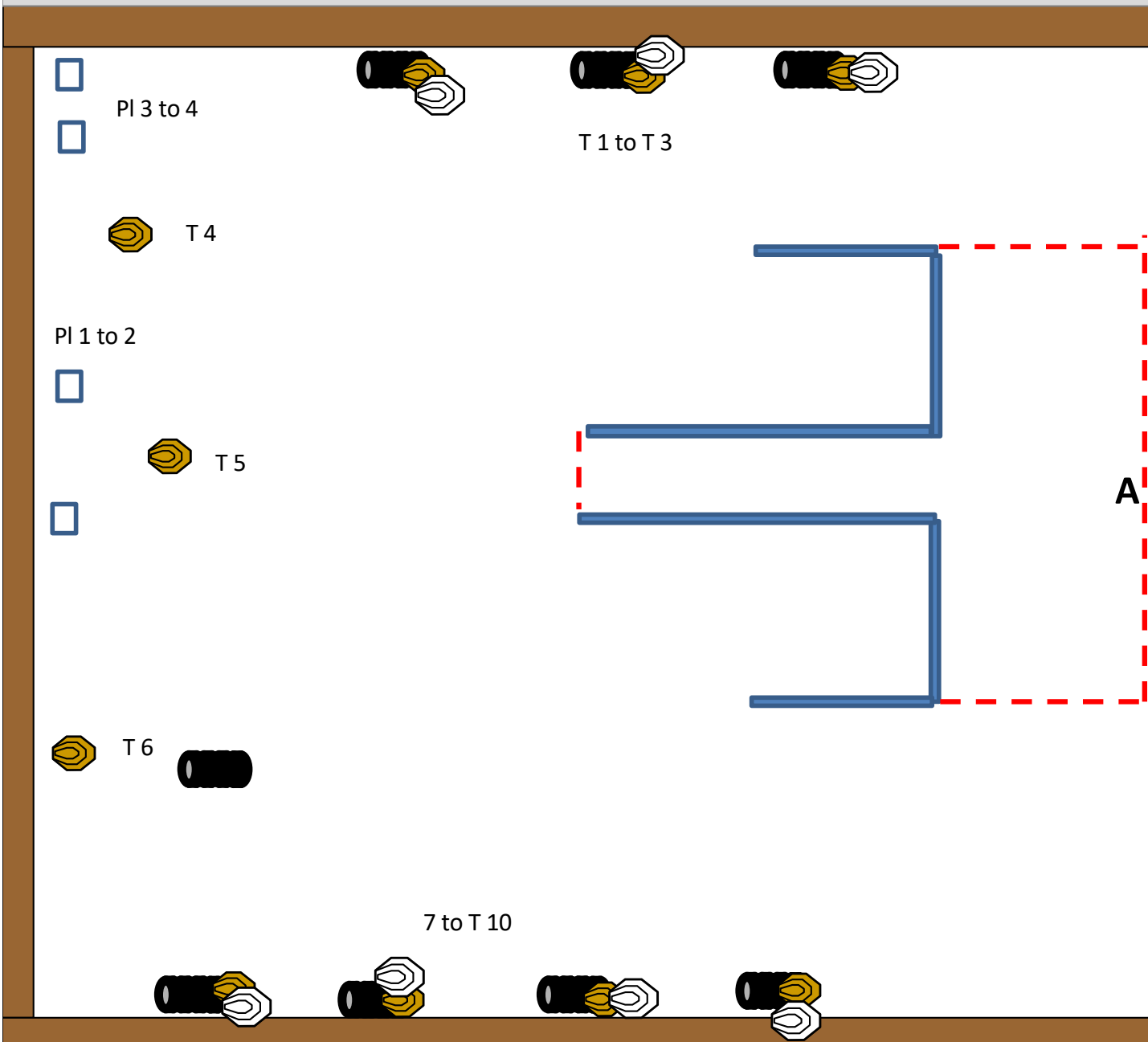
2 poppers

1 Plate

Popper 1 activates bobber and turner T 2 and T3, popper 2 activates swinger T1, all of which remains visible and carries drop shot penalties.

Stage 3, Range 3 – Medium Course

START POSITION: Competitor starts at A facing down range.



STAGE PROCEDURE

On audible start signal engage targets as they become visible, whilst remaining in the demarcated area.

DISTANCES: 6 to 15 m

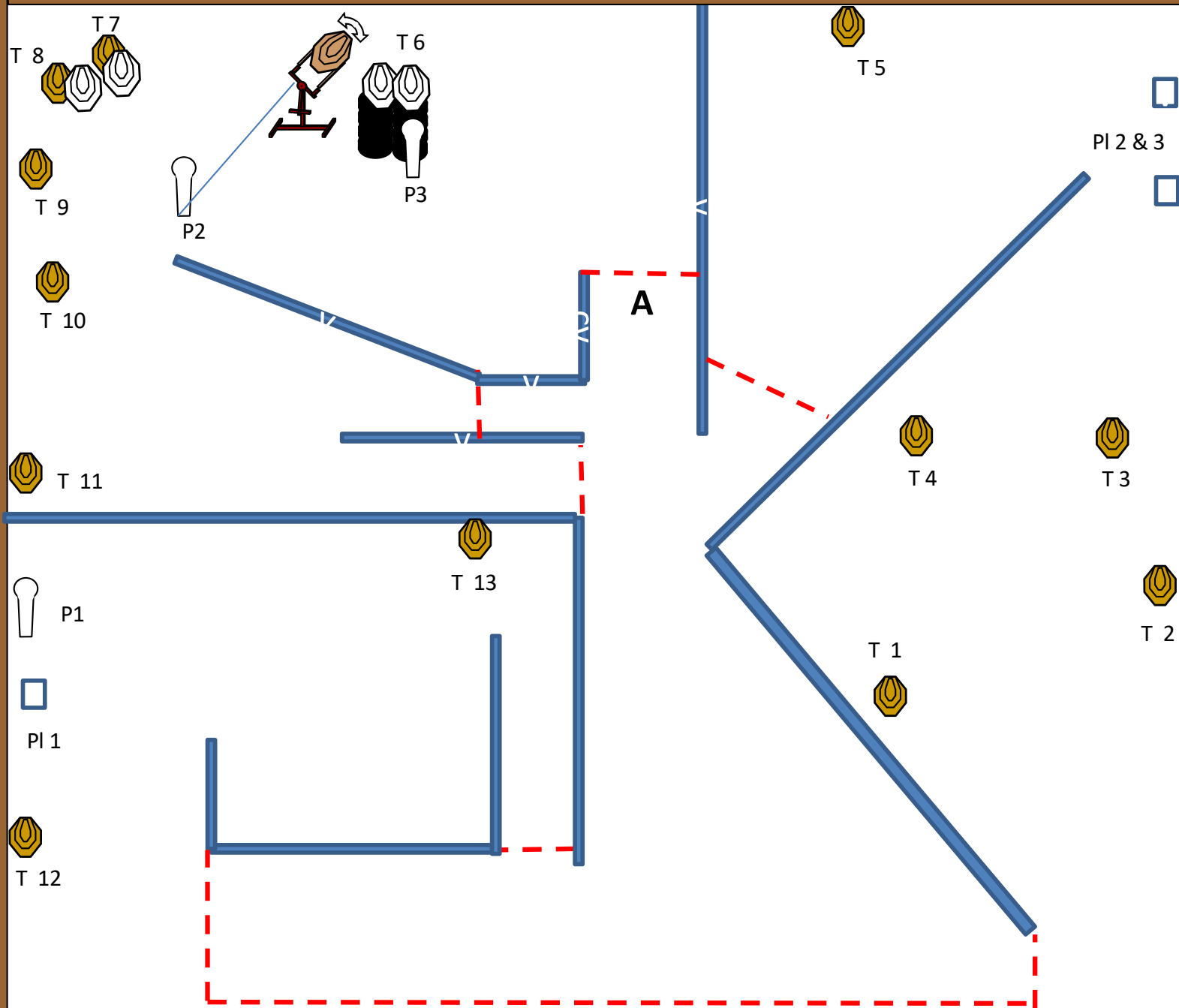
MINIMUM ROUNDS: 24

SCORING: 120 points
10 IPSC Targets
4 Plates
6 No Shoots



Stage 4, Range 4 – Long Course

START POSITION: shooter starts at A, one foot touching the brandering as indicated.



STAGE PROCEDURE

On audible start signal engage targets as they become visible, whilst remaining in the demarcated area.

DISTANCES: 7 to 30 m

MINIMUM ROUNDS: 32

SCORING: 160 points
13 IPSC Targets
T6 is a swinger activated by P2
3 Plates
3 Poppers
4 no shoot targets

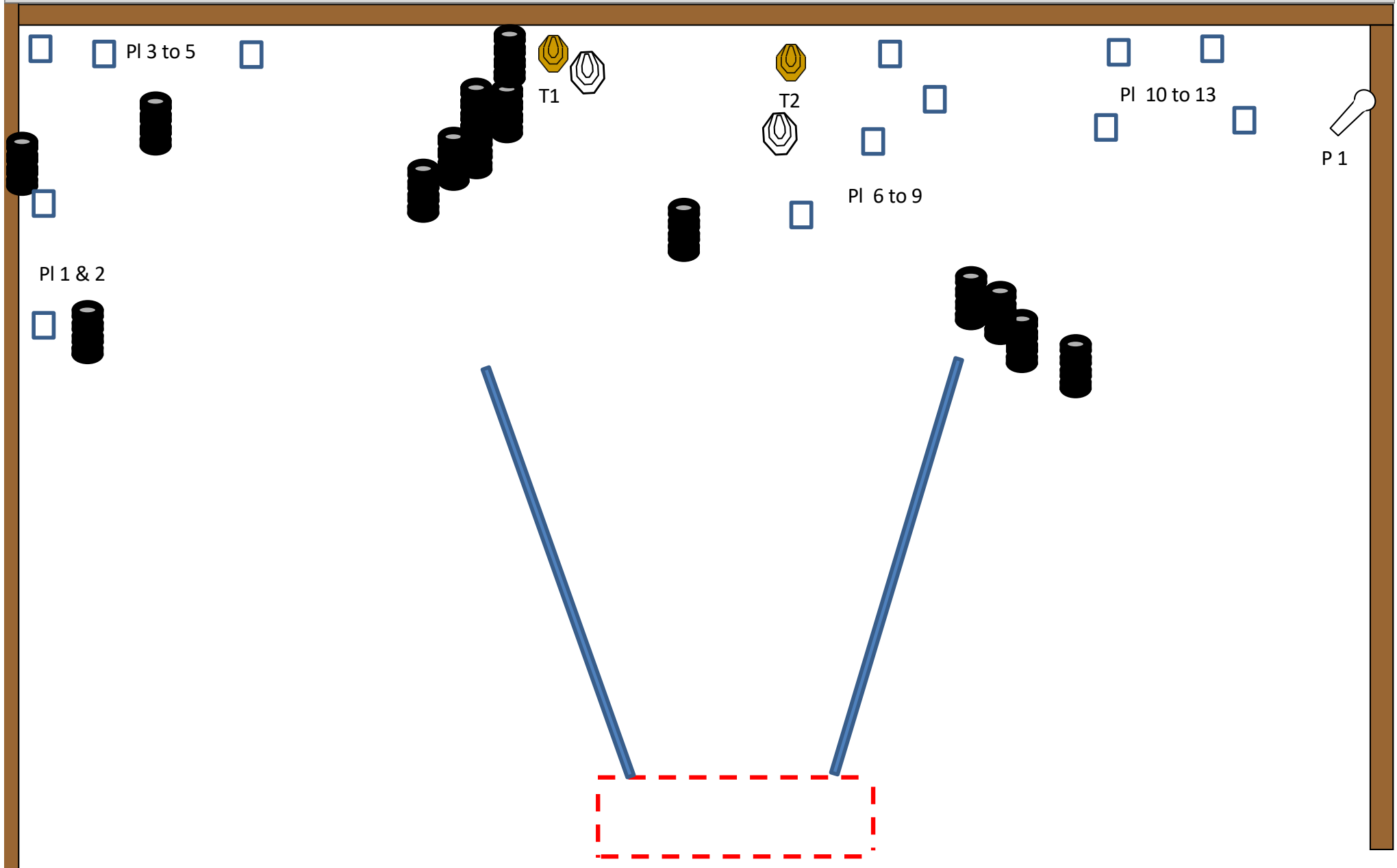




Stage 5, Range 5 – Medium Course

START POSITION: Shooter starts anywhere in the demarcated area. On signal engage targets as they become visible.

Distance 8 to 15 meters, Minimum shots : 18 for 90 points. 2 IPSC Targets, 1 Poppers, 13 Plates, 2 no shoots

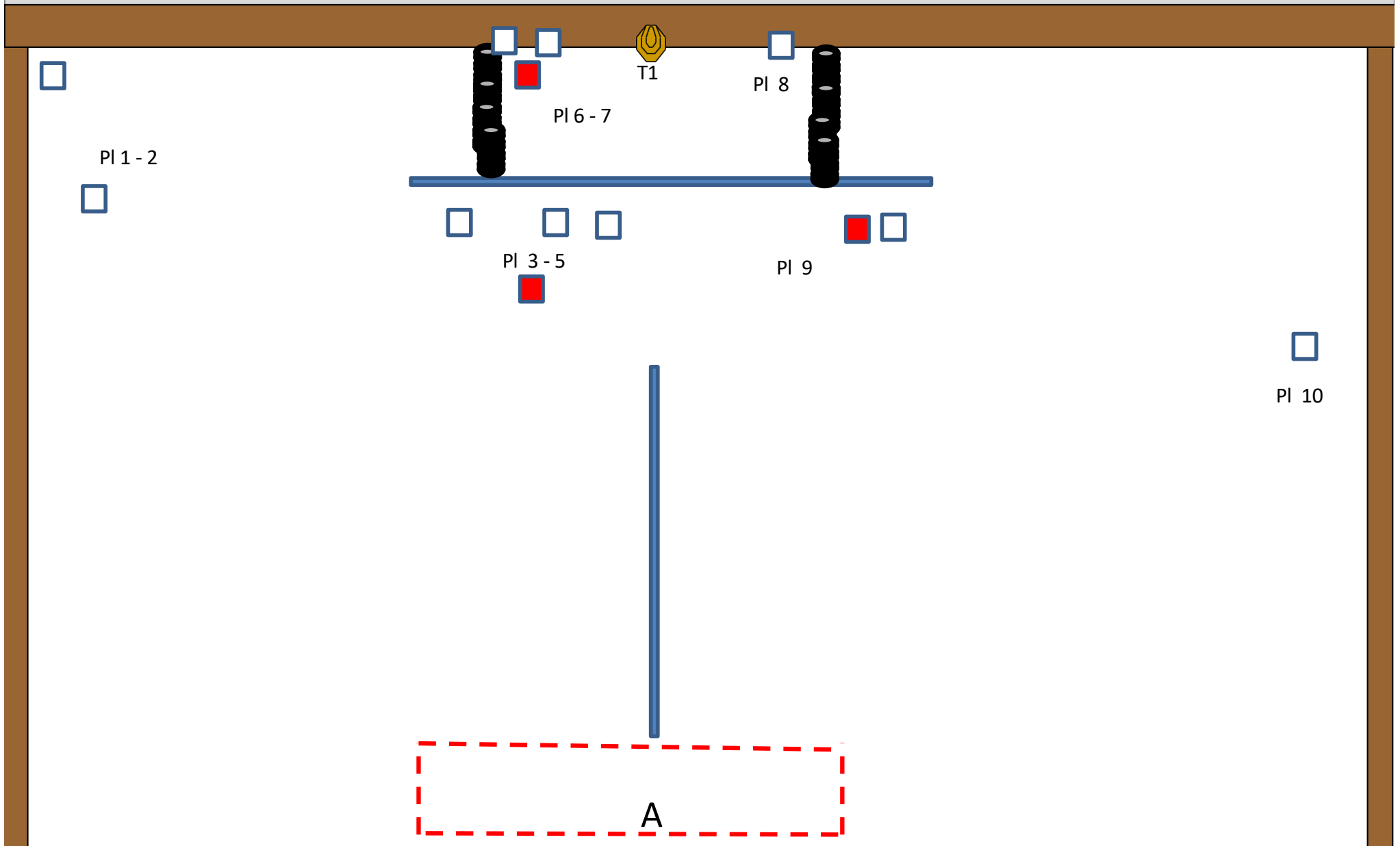


Stage 6, Range 6 – Short Course

START POSITION: Shooter starts at A.

STAGE PROCEDURE : On audible start signal engage targets whilst remaining in the demarcated area.

DISTANCES: 8 to 20 meters. 12 shots, 60 Points, 1 IPSC Target, 10 Plates, 3 No shoots.



Shotgun Stage 7, Range 7 – Medium Course



START POSITION: Shooter starts at A. On Audible signal engage targets as they become visible.
Max shots : 24, 120 Points, 6 IPSC Targets, 12 Plates, 3 paper no shoots, 4 steel no shoots.

