



IROA Shotgun Startup Meeting



IPSC Rules Shotgun



Commands

1. "Load And Make Ready" (or "Make Ready" for starts with an unloaded firearm)
2. "Are You Ready?"
3. "Standby"
4. "Start Signal"
5. "If You Are Finished, Unload And Show Clear"
6. "If Clear, Hammer Down, **Open Action**"
 1. Close the action, pull the trigger to release the hammer and then open the action again. Fit safety flag action may remain open or closed.
7. Range is Clear



IPSC Rules Shotgun



Main Points

Courses of Fire:

	Rounds Max	Scoring Hits	Max Required Rounds per Shooting Position/View	Special Condition
•Short	8	12	8	
•Medium	16	24	8	
•Long	28	32	8	24+ Rounds NO UNLOADED START
Shootoff	8			



IPSC Rules Shotgun



Main Points

Minimum Distances for Metal :

- BirdShot 5 meters
- BuckShot 5 meters
- Slug 40 meters

+ 1 meter if you use fault lines to limit the approach



IPSC Rules Shotgun



Main Points

Detachable Wads in BuckShots and Slugs :

- Paper targets at less than 10m -> Use plywood to avoid problems



IPSC Rules Shotgun



Main Points

To Paint or Not Paint ?

- Scoring targets -> Single Color or NO Paint at all (recommended)
- No Shoots -> PAINT all that having being Hit by a pellet (even if it did no fall !)

WHY: Rule 4.3.4.1 -> if Hit they should be paint (let's use must !)

4.3.4.1 [S] Metal no-shoots, if hit, should be repainted during the scoring process.

Look at the No Shoot if it has a hit before calling it!



IPSC Rules Shotgun



Main Points

Must Fall or Overturn to Score !

Both !!! NO-Shoots and Scoring Targets !!!!

Rule 4.3.1.4

4.3.1.4 [R-S] Metal targets and no-shoots must be shot and fall, overturn or self-indicate to score



IPSC Rules Shotgun



- 9.5.8 [R-S] Frangible targets must fully penetrated or break with a visible piece missing or separated from the original target to be counted for score.





IPSC Rules Shotgun



Main Points

**Same Firearm, Barrel, Type of Sights, Magazines tubes
for All Courses of Fire**

Exception for Magazines tubes:

If they are changed as part of a routine reloading during the COF



IPSC Rules Shotgun



Check the Design of the Support apparatus !!!!

- 4.3.1.1 Metal targets and no-shoots which can accidentally turn edge-on or sideways when hit are expressly prohibited. Using them may result in withdrawal of IPSC sanction.



IPSC Rules Shotgun



If it has Burst or Full Auto, It is prohibited !!!!

- 5.1.11



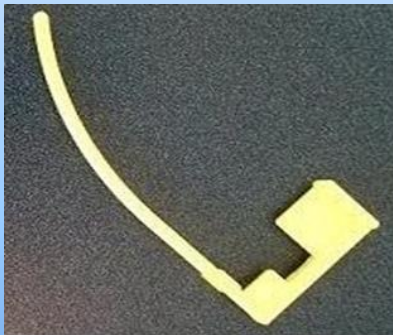


IPSC Rules Shotgun

Carry and Storage The Shotgun



- 5.2.1 Carry and Storage – Except when within the boundaries of a safety area, or when under the supervision and direct command of a Range Officer, long guns must be unloaded and held, shouldered or slung (or placed in a rack), with the **muzzle pointed skywards**. Long guns placed in a slip or case are not required to be pointed skywards. The action may be open or closed, but a **chamber safety flag must be fitted at all times** when the firearm is not in use. Detachable magazines must be removed. Failure to comply may be subject to the provisions of Rule 10.5.1.



Must fit inside the chamber !!



IPSC Rules Shotgun



Carrying Devices Max Dimensions



OR



Max 6 in the Caddy



IPSC Rules Shotgun



Ammo Carrying Devices Types





IPSC Rules Shotgun



Ammo Carrying Devices Types





IPSC Rules Shotgun



Carrying Ammo





IPSC Rules Shotgun



Carrying Ammo

NOT ALLOWED !!!





IPSC Rules Shotgun



Carrying Ammo

1 Belt only at waist Level !!!! - 5.2.3

**Any part of ammo at max 75mm from body – 5.2.5
(exception: Open Division)**

+

At Forearm in loops or clips

+

At the Gun: Loops, clips or other suitable device

No Ammo! When the gun is at the Rack

+

At a the Sling (If so The Sling must be used in all COF)



IPSC Rules Shotgun



- 5.5.6.2 [S] Only Cartridges with conventional wads are permitted.



Conventional ONLY





IPSC Rules Shotgun



- 5.5.7 [S] All rounds loaded in the shotgun prior to the start signal must be of the same configuration (i.e.wad, velocity, propellant, pellet weight, pellet size, length, etc.). Violations may be subject to Rule 10.6.1.





IPSC Rules Shotgun



Shotgun Customization Allowed

- Enlarge the loading port :





IPSC Rules Shotgun



Shotgun Customization Loading floor plate Allowed

- Modified: Not more than 75 mm in length, must not protrude more than 32mm in any direction
- Standard and Standard Manual: no part protrudes beyond the standard frame
- Standard Division: External feed ramps as direct replacements of carrier release button (Remington 1100 e 1187)





IPSC Rules Shotgun



Shotgun Chockes

- These are considered compensators !!





IPSC Rules Shotgun



How to Measure the GUN or the Box Testing:

- Fit the biggest Competitor Choke
- Expand the collapsible stock



BOX Testing for OPEN and Modify

| ←----- 1320mm -----> | (Internal size)





IPSC Rules Shotgun



- 8.7.1 [H-S] Competitors are prohibited from taking a **sight picture and/or dry firing prior to the start signal**. Violation will result in a warning for the first occurrence and one procedural penalty for each subsequent occurrence in the same match. Competitors may, while pointing their firearm at the ground, adjust electronic sights.
- **Sight Picture: Aiming at a targets without Actually shooting.**
- **Dry Firing: The activation of the trigger and/or action of a firearm that is totally devoid of ammunition.**



IPSC Rules Shotgun



- 9.5.1.1 [S] If two or more targets receive scoring hits as a result of a single shot they will both, or all, be scored normally unless 9.1.5 applies (see Rule 9.5.6).
- 9.5.6.1 [S] A competitor will **not incur failure to engage** penalties where two or more targets receive scoring hits as a result of a single shot (see Rule 9.5.1.1). If a competitor fires **less shots** at a target array than the number of targets in that array, **and one or more target(s) does/do not receive scoring hits** then failure to engage penalties and misses will apply as appropriate.



IPSC Rules Shotgun



- 10.5.2 [R-S] Allowing the muzzle of a firearm to point uprange, or past the default, or specific safe angles of fire during a course of fire. Exception: when fitting the chamber safety flag in compliance with Rule 8.3.7.2 the muzzle may point uprange within a radius of 50cm from a competitor's feet.



IPSC Rules Shotgun Divisions



	OPEN	MODIFIED	STANDARD	STD MANUAL
Compensator Ports, Etc	YES	YES	NO	NO
Capacity restrictions for initial load prior to start signal	14 <i>Fixed Mags</i> 10 <i>detachable</i>	14	9	9

Revolving or multiple mag -> OPEN



Recomendations



- Long Pants !!
- Use OFF! Deep Woods on the your pants and shoes !!
- Use SunBlock
- Drink water !!! (always, do not get to the point of feeling thirsty)



Thank You !

- *It is an honor and a privilege to serve as an IPSC Range Officer*